

**FREE  
EVENT!**



# Giant Ragweed Management Plot Tour

Join us to learn more about **giant ragweed management** in corn and soybean production fields.

Research plots showcasing comparison of PRE and POST-emergence herbicide programs and cereal rye cover crops will be on display.

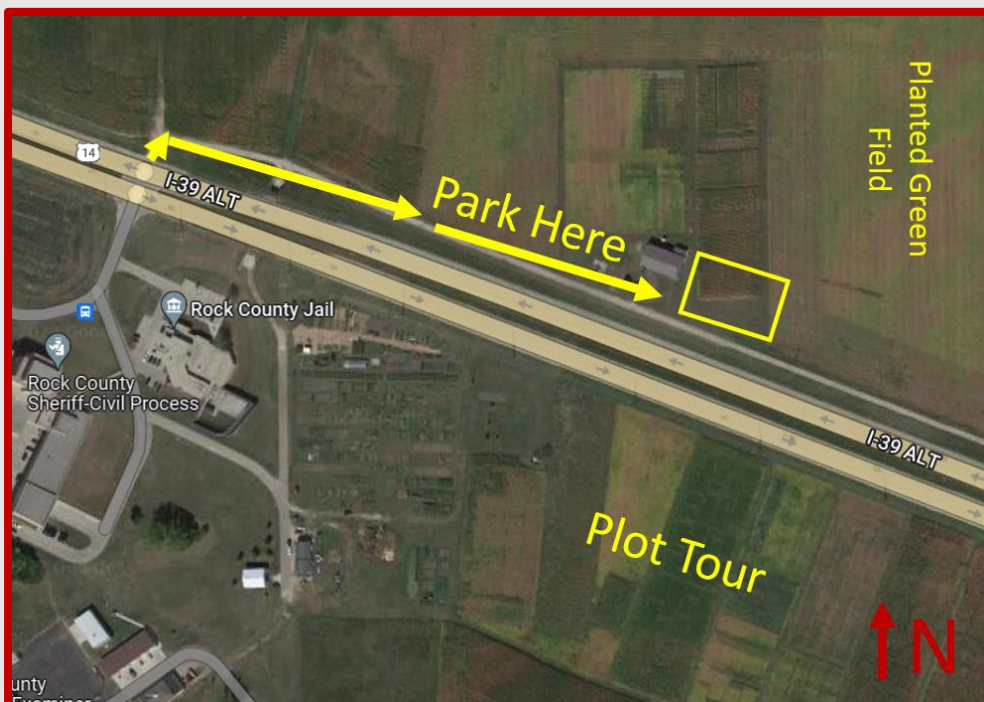
Tour production field & visit with a farmer with experience planting corn and soybeans green into cereal rye.

**2.0 Pest  
Mgmt.  
CEUs  
Available**

**Thursday, June 16, 2022**  
**Rock County Farm, Janesville, WI**  
**200 US-14 (N of entrance to Rock Co Jail)**  
*Park in field identified below*

Registration at 9:40 AM  
(Refreshments provided. Lunch to follow Plot Tour)  
Tour starts at 10 AM (concludes by 12:00 PM)  
***Grilled Brat Lunch Provided Following Tour***

## Sponsors:



**Cropping Systems Weed Science**  
UNIVERSITY OF WISCONSIN-MADISON

**Questions, contact:**

Nick Arneson,  
Outreach Program Manager

[njarneson@wisc.edu](mailto:njarneson@wisc.edu) OR 402-676-1618