

Welcome to Swine Kick-Off

Reminders!

- Make sure that you signed in tonight.
- Point cards will be signed by committee members at the end of the meeting.
- Point cards can be found online. Please check what counts as points and what is required. Point cards are due May 27, 2022.

<https://jefferson.extension.wisc.edu/4-h-youth-development/4-h-projects/map-pages/>

Website includes:

Bylaws

Handbook

Record Book

Data Log Tracker

Other Education MAP Information

Topics

1. MAP Handbook - review of important dates and changes
2. Basics of Animal Care - Swine Representatives
3. PRRS/PEDv Rope Testing Procedure

MAP Swine Representatives

1. Adult Rep – Katelyn Thom
 2. Adult Rep – Drew Hansen
 3. Youth Rep - Open
 4. Youth Rep - Open
- Please see MAP Handbook for contact information
 - You are more than welcome to contact any representative in the handbook when the need arises.

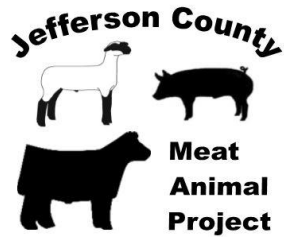
Swine Fair Superintendents

1. Ed Bielinski, 920-285-6949
 2. Erin Hanus, 920-285-5999
- See the Jefferson County Fair Book for contact information
 - Contact them for animal or show questions or concerns

Make sure you are on the “Jefferson County Fair – InFAIRmation” email distribution list. This is how information regarding Fair and the Auction will be communicated. Go to Fair Park Website under “Get Involved” and then “Get Updates” -

<https://www.jcfairpark.com/email.aspx>

Questions regarding the 2022 Fair and Rules, please contact the Fair Office at 920-674-7148 or Brian Bolan at bbolan@jeffersoncountywi.gov



MAP Handbook

— Important dates & changes —

Important!

- You must read your MAP handbook.
- Not all dates, rules, and requirements will be covered tonight.
- It is your job to understand the rules.
- Due dates are not flexible.
- Ask questions!

MAP CALENDAR

The MAP Committee and the Extension office will do their due diligence to communicate effectively and often if the 4-H year does not go as scheduled below. Please follow the Extension website and emails to get the most up-to-date information.

2021-2022 MAP Project Calendar

November 9	2021-2022 MAP Meeting Dates 2nd Tuesday of month Extension, Jefferson County Office 864 Collins Rd, Jefferson 7 p.m. (Unless otherwise noted or publicized)	February 15, 2022	Sheep Project Informational Meeting 7-8 pm, Extension Office
January 11		March 8, 2022	Meats Meeting (Carcass Point Opportunity) 6 p.m. Extension Office
February 8		Tentative March 12, 2022	UW-Madison Meat Science Building Tour
April 12		March 15, 2022	YQCA in-person opportunity 6 p.m. Extension Office
June 14		April 8, 2022	Project Learning Day Fair Park, Jefferson (includes skill-a-thon, species workshops, and YQCA opportunity)
September 13	November 16, 2021	April 12, 2022	Record Book Training 6 p.m. Extension Office
	Beef Project Informational Meeting 6:30pm - 7:30pm	April 15, 2022	All 4-H project changes MUST be made in 4honline.
	Meats Meeting (Carcass Point Opportunity) 6 p.m. Extension Office	May 27, 2022	Point Cards due to Extension Office by 4 p.m.
	Meats Meeting (Carcass Point Opportunity) 6 p.m. Extension Office	July 13-17, 2022	Jefferson County Fair
	Swine Project Informational Meeting 6-7 pm, Extension Office	September 1, 2022	Project Record Books due to Extension Office by 4 pm



MAP Calendar - Noted Dates

- Tuesday, March 15 at 6pm at Extension Office
- Saturday, April 9 at Project Learning Day at Jefferson County Fair Park

YQCA can be completed online or in person.

Certificates must be turned in to the office by **May 27, 2022**

Youth for the Quality Care of Animals (YQCA)

- Statewide program
- Must be YQCA certified to sell
- Must turn in a copy of your certificate once training is completed.
- Certificate due by May 27, 2022
- 13th year member needs to take YQCA online only
- Ways to get certification:
 - Online - \$12 per youth cost
 - In-Person Training - \$3 per youth cost; must pre-register for your session. Spots are limited.
 - Test Out Option

Go to YQCA website to signup for the option you wish to complete: <http://yqca.org>

YQCA Implementation

Test-out Certification – NEW 2019

Test-out option for states that accept this certification is offered to

Intermediate 12 for 3 years at \$36

Senior 15 for 4 years at \$48

Young Adult 19 for 3 years at \$36

- The test consists of 50 questions and has a pass rate of 80% or better for certification
- At the bottom of the “Course List” page are the test-out options:
 - Intermediate 12
 - Senior 15
 - Young Adult 19
- It is the user’s responsibility to ask if their state recognizes YQCA Certification via test-out
- Participants will be charged when they pass the test
- Once passed, the courses associated with the certification (i.e., intermediate 12, intermediate 13 and intermediate 14) will be available on the user’s “My Library” page
- Participants that do not pass will be prompted to take the instructor-led training or web-based training annually

MAP Point Cards



January 11, 2022 – 6 pm at the Extension Office	Meats Meeting (Carcass Point Opportunity)
January 11, 2022 – 7 pm at the Extension Office	MAP Committee Meeting
February 8, 2022 – 6 pm at the Extension Office	Meats Meeting (Carcass Point Opportunity)
February 8, 2022 – 7 pm at the Extension Office	MAP Committee Meeting
February 15, 2022 6-7 pm at the Extension Office	Swine Project Informational Meeting
February 15, 2022 7-8 pm at the Extension Office	Sheep Project Informational Meeting
March 8, 2022 – 6 pm at the Extension Office	Meats Meeting (Carcass Point Opportunity)
March 12, 2022	UW-Madison Meat Science Building Tour (Carcass Point Opportunity)
March 15, 2022 – 6 pm at the Extension Office	In-person YQCA Training
April 9, 2022 Fair Park in Jefferson	Project Learning Day (includes skill-a-thon, species workshops, in-person YQCA)
April 12, 2022 – 6 pm at the Extension Office	Record Book Training
April 12, 2022 – 7 pm at the Extension Office	MAP Committee Meeting
April 15, 2022	All 4-H project changes must be made in 4honline
May 27, 2022	Point Cards due to Extension Office by 4 pm
June 14, 2022 – 7 pm at the Extension Office	MAP Committee Meeting
July 13-17, 2022	Jefferson County Fair
September 1, 2022	Project Record Books due to Extension Office by 4 pm
September 13, 2022	MAP Committee Meeting

Point Cards Due May 27, 2022

All members must obtain 4 points:

- 1) YQCA Certification
- 2) Carcass Education
- 3) Record Book
- 4) Other Educational Point

*13 Year/19 year old members are exempt from educational point card requirements including the carcass point.

MAP Awards Presentation



Top Point Cards – Given to 2 members in each grade group – 3rd to 5th grade, 6th to 8th grade, and 9th to 12th grade

Outstanding Record Books – Three awards for each species will be given;

1st place = \$100, 2nd = \$50, 3rd = \$20

Skill-a-Thon – A plaque will be awarded to the top junior and senior skill-a-thon test participant for beef, sheep and swine.

Premier Exhibitor Award – Given to the member whose animal places the highest when averaged between live show ranking, live showmanship ranking, and individual placing from Skill-A-Thon for each specie.



MAP Record Book

Record Book Training
Tuesday, March 12 6pm

Record Books Due
September 1, 2022

Record Books

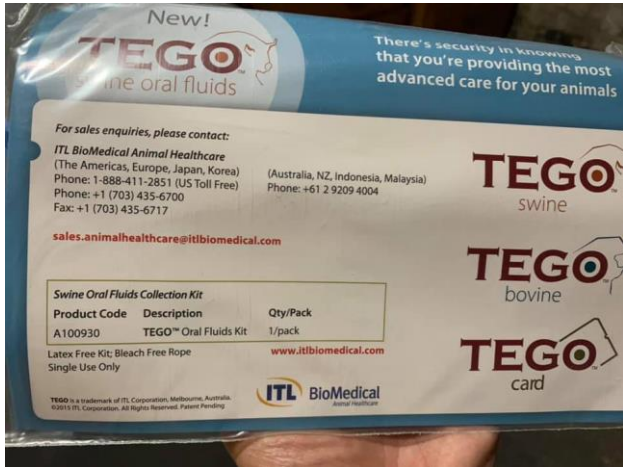
- Emphasis on writing goals.
- Read thru your record book.
- Set goals now.
- Record data throughout your project.
- Attend training for more details.
- Must complete a record book for one educational point.
- A record book is required for every project member who weighs in an animal at the fair.
- Members choosing DNA submission should estimate the starting weight.
- Everyone should check which identification option was chosen.
- 2022 record book completion will satisfy one point for 2023.

Health Requirements

- Ear Tags and DNA will be distributed through the Fair Park
- Non-terminal fair/sale for 2022.
- Requirement for all swine exhibitors this year: You must have a PRRS/PEDv test done for attending fair.
- This is a rope test you will have to purchase and complete prior to having your fair health papers. Tests are good for 90 days.
- **All questions regarding DNA/weigh-in or SALE questions contact Brian at the Fair Park at 920-674-7148**

Rope Test Procedure**REQUIRED TO SHOW AT FAIR

- Step 1: Acquire a test kit from your local vet:



- Helpful Tip: DO NOT WAIT!!! This test can take up to a week or two to get potentially, be sure you are doing this in a timely fashion. Recommend to test at least 3-4 weeks prior.

Rope Procedure/Vet Papers

When you are having the test submitted. Make sure every exhibitor's name is listed on all the testing paperwork at farm where animals are housed.

Health Papers: Pink copy is needed for the fair

- Please make sure your vet has the correct exhibitor names on the information along with the correct Premise ID.
- There will also need to be a statement written by the vet on the health certificates.

Wormers

- As a general rule, pigs for Jefferson County Fair should be born after January 1.
- Buy piglets that are fully vaccinated and wormed.
- Wormers should be used every 30 days.

Feed

- On average feed conversion is 3 pound of feed for 1 pound of gain.
- Use a full balanced 15-22% protein show feed. Start with a higher protein and decrease protein the closer you get to show day.
- Using steam rolled oats; keeps swine filled and slows growth if you have a larger pig. This also can help with pig digestion.
- Feeding swine separately by pan or hanging buckets is preferred.
- Clean fresh water is needed at all times.
- Weigh your pigs frequently to know your rate of gain.

Conditioning

- Washing swine in warm temperatures at least weekly will help with swine hair coats.
- You can use a mild hair soap to wash swine (Suave, Main and Tail).
- Aerosol/spray oil can be used at home to help condition swine hides and hair, work hair in direction the hair grows.
- No oil can be used at fair on show day.
- Clipping swine hair is optional: head, tail, neck.
- Pigs should come to fair clean and free of manure.

Breaking your pig

- Whips are preferred method to drive a pig, pipes and canes can also be used.
- Start by walking your pig in their pen, getting them used to the whip. Slowly take your pig out of their pen to go further distances as walking.
- Walk pigs in different patterns daily to get them used to listening to you.

Breaking your pig continued

- Use whips by tapping gently but firmly under the pigs head to keep your pigs head up. Alternate back and forth from tapping on side of neck, stomach and under their head to get them to walk forward.
- It is encouraged to walk your pig on all different terrain: sand, grass, concrete.
- Use patience with your pig and don't stress them out while breaking them.
- Start early!! Practice makes perfect.

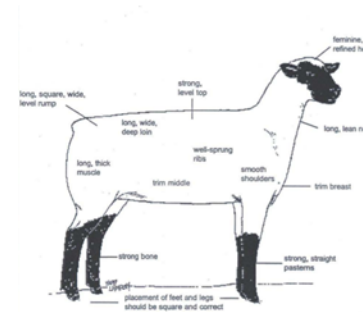
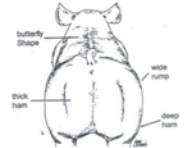
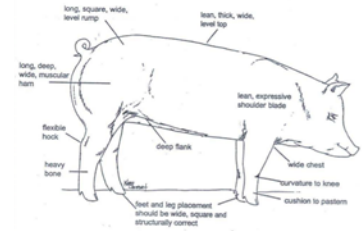
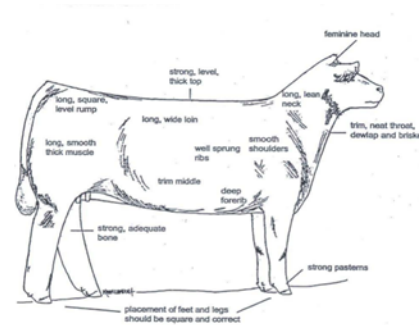
Ways to Learn about the Livestock Industry

Livestock Judging

Meats Judging

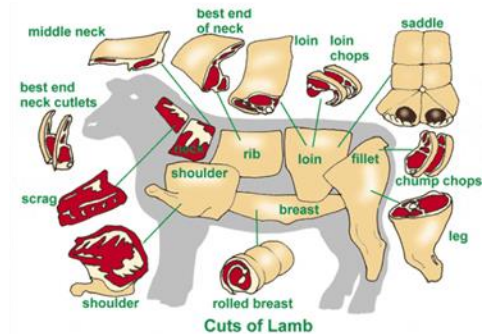
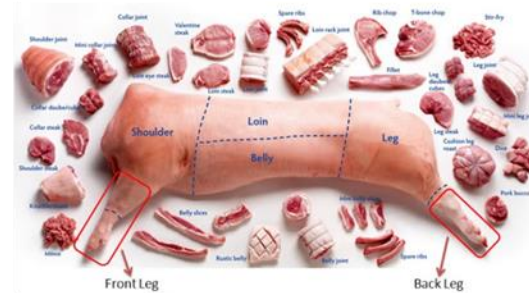
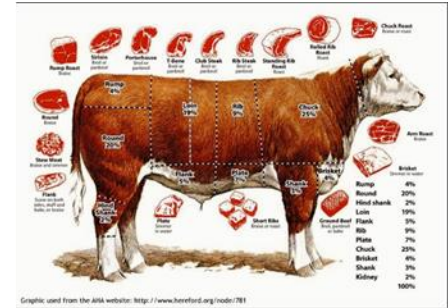
Livestock Judging

- Evaluate breeding and market classes for sheep, swine, and beef
- Producers - Evaluate livestock on their potential to produce high quality, efficient breeding animals as well as saleable offspring.
- When judging livestock, we differentiate among “superior”, “average”, and “inferior” livestock.
- Looking for the most desirable animals to fit our particular needs
- Teaches effective communications skills



Meats Judging

- Determination of the quality and lean meat yield of a carcass or wholesale cut
- Evaluate beef/sheep/swine carcasses for quality and yield grade at the 13th rib
- Identify wholesale and/or retail cuts.
- Order buyers, feeders and packers - Evaluate livestock on their ability to convert feedstuffs into red meat for the consumer.
- Teaches what is needed to have a flavorful piece of meat and how to cook it



Reminders!

- Point cards can be found online, please check for what counts as points and what is required. Point cards are due **May 27, 2022 by 4pm.**
- YQCA is due to the Extension Office on **May 27, 2022 by 4pm.** (reminder do not wait until the last minute, if you fail the test you will have to wait an hour before retaking)

Questions?

Thank you for attending !!